

## Fund Drive Nears End; Need More

Dear Alumnus,

Are we beating our heads against a stone wall in our attempt at plant expansion, larger Dana faculty and "early accreditation"?

We all love Dana, but I wonder how much of her can be salvaged after 1960.

This letter from a concerned alumnus appeared in the old Alumni Quarterly four years ago.

Answers to those questions took up more than a few inches of type.

Today, the answers are in brick and concrete, grass and gravel, masonry and steel.

The answers are on the campus, and on the books.

### First Phase

The books show that 900 thousand dollars of the million dollars hoped for in the Development Drive is in sight.

The goal of the drive is within reach—but this is only a start.

"This is only the first phase," Development Director Boas Wesimann said. "It will take many more dollars to fulfill our long-range plan."

He noted that the college still needs "increased support from everybody and anybody."

### "Accomplishment"

"I feel that this million-dollar program for Dana is a real accomplishment for us," Mr. Weismann said.

To quote a cigaret commercial, "They said it couldn't be done." But it was done, or very nearly, Mr. Weismann said. "The million-dollar goal was not so ridiculous as many thought at the time we announced it," he said.

Mr. Weismann said he

(See Page 11)

## Next Step: Borup Hall

With Mickelsen Hall completed and being lived in by about 140 women students, college officials this month turned their attention to the next phase of the long-range building program.

Already on the drawing board for 1961 construction is Borup Student Activities-Physical Education Building.

This addition to the Dana physical plant will be built on the northwest corner of Viking Field to form another link in what will be a circular chain of buildings around a central campus mall.

The building will be made possible in large part by a 176-thousand-dollar bequest from the estate of the late Mrs. Maren Borup, Beresford, S. D.

The board of trustees is expected to give final approval to building plans at its October meeting.

At present the building is planned to include:

Physical education areas and classrooms; student government and publication offices; a basketball court; dirt-floor athletic practice facilities and a student recreation area.

Plans call for completion in time for the 1961-62 school year.

## Envelope Added For Contributions

Bound into this issue of the Alumnus you will find a postage-paid envelope addressed to the college.

It goes with a story elsewhere in this issue telling of the lag in gifts to the alumni fund program.

The envelope is to be used in mailing contributions to the fund. The rate of return, it is hoped, will be high.

## Homecoming Will Include New Dormitory Ceremony, More Alumni Coffee Time

### Campus Displays Featured

A 1960 Homecoming is planned which promises to be anything but an anti-climax to the Diamond Jubilee fete of last year.

Homecoming Committee Chairman Terry Hess reported a schedule for the October 21-23 week end which includes all of the usual alumni activities plus a few additions designed to provide a fuller, busier celebration.

One of the new wrinkles is a substitution of campus displays for the traditional parade.

There will be plenty of opportunity for coffee and conversation. Kaffeboards are scheduled Friday night after the coronation and Saturday from 9 a.m. to noon. Saturday's session will be held at Mickelsen Hall.

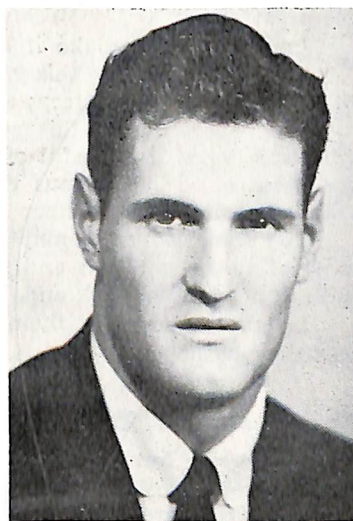
Announcement of display winners will be at half-time of the Dana-Concordia football game. This will be the second Homecoming game played on Viking Field.

Also scheduled for half-time: Traditional presentation of the queen and her court and a band show. As in the past, high school bands probably will take part.

A principal attraction will be the Sunday afternoon dedication of Mickelsen Hall.

Plans call for dividing the banquet in half, with students at First Lutheran Church and alumni in the college dining hall.

Pastor Ervin Bondo will conduct church services Sunday morning at First Lutheran.



### What's My Line?

This is alumnus John D. Linahan, who gets paid for doing what everybody else has to take two weeks off in the summer to do. For a closer look at this unusual job, turn to Page Six.

## Back to Normal. . . 8 Pages Again In Next Edition

The December edition of the Alumnus will shrink to normal size—eight pages.

This 12-page issue is a special issue for Homecoming. The additional reading was made available largely through the efforts of Phil Pagel and Mrs. Dorothy Andersen (Dorothy Jensen, Class of 1956) of the college public relations staff, other college officials and the staff of the Lutheran Publishing House.

The editors are especially interested in obtaining news of Dana Clubs for the December edition.

A quarterly bulletin published by the Alumni Association of Dana College and Trinity Seminary at the Lutheran Publishing House, 138 No. 17th Street, Blair, Nebraska. All matters pertaining to business should be addressed to the Alumni Office, Dana College, Blair, Nebraska. Second class postage is paid at Blair, Nebraska.

Alumni Association of  
DANA COLLEGE and  
TRINITY SEMINARY

Pres. Bob Hemmingson  
Sec. Luella Nielsen  
V.P. Forrest Leighton  
Treas. Earl Pace

## 'All Must Work To Keep Honest Pride In School'

By Myrv  
Christopherson

Student Body President

This year is certain to be a big year for Dana College. New changes have taken place physically and other changes are certain to take place as the college grows.

We, the students of Dana, are well cognizant of the growing need for student leadership, dedication and cooperation. At present we are busily engaged in a project that could improve the college program. We are trying to raise 100 thousand dollars by soliciting loans at four per cent interest per annum.

If we can raise this amount the new physical education building will include a swimming pool. A great deal of student effort must be expended to make this project a success.

One of our board members stated that "the greatest asset Dana College has rests in its students and we must utilize some of that power."

We're grateful for what former students have done to beautify our campus and make it what it is and we want to do our part, too.

We must ask you who are friends and alumni to cooperate with us in our efforts.

Homecoming will be October 21-23 this year and the student committee has been  
(See Page 10)

## It's That Time Again

In the last Alumnus we printed a story stolen from a daily newspaper which said colleges are beginning to take their alumni more seriously and are offering them all sorts of cultural and educational inducements to return to the campus now and then.

This is well and good as far as most colleges are concerned. Anything that will help to make the old grad feel wanted is certainly an effort worth emulating.

However, without being so audacious as to question the conclusions of the no doubt qualified researchers who came up with the alumni-inducements angle, we can say that we hope it isn't necessary here.

After all, what inducement is needed for the Dana alumna or alumna to return to the campus other than affection for the old school and eagerness to meet with the old crowd again?

Which brings us, in a sneaky and devious way, to The Message:

Let's all try to make it back for Homecoming.

There's a lot to see this year—the dedication of the beautiful new women's dormitory; a stirring football game played by a Viking team which this year promises to be a real stem-winder; a whole campusful of striking displays, and, of course, the beauties of the campus which we've known for so long—Old Main, the park, Pioneer Memorial and the rest.

The Homecoming committee of Dana students has put in a lot of sleepless nights and frenzied days trying to fix us up with a memorable week end.

Let's not disappoint them, or our friends who hope to see us on campus.

## Sparing and Sharing

The slogan for this year's annual-gift drive might well be this:

"We can spare it; let's share it."

Our college is in the midst of a tremendous expansion program. Hundreds of thousands of dollars are being collected and spent to add much-needed physical facilities to the campus.

At the same time, the administration and faculty are working mightily to improve even more the standards of Christian higher education.

In the face of this, it should be relatively easy to meet and surpass the annual-gift goal of \$17,500.

Alumni especially are being urged to contribute to this program, and rightly so.

It doesn't take much. If enough of us chip in one, two, five or ten dollars the goal can be topped with ease.

It's the very least we can do for our school.

We can spare it; let's share it!

## Spirit Still Exists

(Reprinted from Hermes)

We of the Hermes staff wish to extend to you, the alumni, our warmest welcome to our campus. May your Homecoming visit be cherished as a rewarding memory for everything that you have done for Dana.

Every year classes change, the faculty changes and the physical plant is improved. Yet, we sincerely hope there is one thing that will never change on our hill. That is the feeling which still exists called the "Dana spirit."

It is this spirit stemming from our religious heritage that makes Dana unique. We hope you will not feel like outsiders or strangers upon your homecoming, but that you will feel this spirit again as you have in the past and once more be a part of our family.

With these thoughts in mind, we say: Welcome back, with a special invitation to drop in at the Hermes office.

## Traditional Spirit At Homecoming

One of the scenes which I associate with early rural America is that of the family get-together. Often on a Sunday afternoon, when the farm chores were laid aside, all the relatives and friends for miles around would gather at one of the homes.

The day would then be spent in relaxed fun, conversation and fellowship. Though I did not live in this era, there is a warmth about this scene which appeals to me. In an age of high speed living there seems to be less time for such simple gatherings.

However, one of the few occasions when I have felt that the situation approximated that of these earlier days is a Homecoming gathering. This is in a real sense a family get-together; in our case, the Dana family.

Certainly we are not a blood-related family, but we are related in spirit. Out of our common contact with the college, we are one in spirit. This is what we refer to when we sing in the Dana song, "Thy spirit live . . ."

Homecoming, too, is a time of relaxed fellowship and conversation. It is a time when we examine and share in the progress made by this school, which serves as the basis for our family ties.

I hope this Homecoming you will join your "relatives" on the Hill. It will be a pleasant experience, I assure you. I will be looking forward to extending a warm handshake to each of you as a "brother or sister."

Bob Hemmingson

## Here's A Record For Us To Beat

Alumni of Midland College, Fremont, Neb., contributed \$26,431 toward college programs for their school last year.

They gave \$15,365 in the 1960 alumni fund drive. An additional \$11,066 was given for the school's building program, scholarship funds, the student loan fund and other projects.

## Annual Giving Project Meeting Weak Response

The alumni annual-gift drive for 1960, at the present rate, will not set any records for generosity.

"We need a real push to get off the ground," Development Director Boas Weismann said.

Total received so far from 150 contributors is only \$1,959. The year's goal is \$17,500.

There are approximately three thousand graduates and former students on the Dana records.

### It Counts Up

It would take only a small effort from each of these to achieve a solid result, Mr. Weismann pointed out.

If each gave only five dollars, the total would be 15 thousand dollars, nearly matching the goal.

And a 10-dollar contribution from each alumnus would swell the total to 30 thousand dollars—almost double the annual goal.

### "Real Need"

As Alumni Association President Bob Hemmingson noted in letters accompanying the first annual-gift appeal, an alumnus is anyone who has attended an institution.

This includes, Mr. Weismann added: "every person who has spent some time on our campus."

Alumni gifts are needed in part to help supplement possible loss of revenue from church sources, Mr. Weismann said.

"We really are faced with a real need in this unrestricted gift program," he added.

## Danish Material Needed in Library

College officials have asked alumni to help furnish material for the Dana library.

Especially needed are items of Danish-American historical interest such as books, silver and brass, porcelain, paintings and colorful pieces of tapestry.

Also, with the increase in enrollment, there is greater need for books, periodicals and audio-visual materials.



Eskildsens . . . To Japan.

## Don Poh Leads Green Bay Club

A 1950 graduate, Donald Poh, has been elected president of the Brown County Civic Music Association in Green Bay, Wis.

The group sponsors professional concerts.

Mr. Poh owns a piano company in Green Bay and also is president of the Adams Street Merchants Association, a retail business organization.

Mr. and Mrs. Poh (Ann Thomsen, Class of 1950), have two daughters, Julie Christine, nine, and Brenda Elizabeth, six. They live at 2375 Riverside Drive, Green Bay.

## Walter H. Judd Spoke at Dana

Representative Walter H. Judd of Minnesota, who caused such a stir at the recent Republican National Convention in Chicago, is no stranger to many alumni.

Keynote speaker Judd was the Homecoming banquet speaker at Dana in 1954.

Dr. Judd, a former medical missionary to China, is a native of Rising City, Neb.

## Bridge Replaced By Wider Drive

Homecoming visitors will notice something new even before they reach the campus.

The city of Blair has torn out the narrow old bridge over Cauble Creek at the bottom of College Hill and replaced it with an earth fill.

## Eskildsens Sent As Missionaries

The Rev. and Mrs. Edward C. Eskildsen have been commissioned as missionaries to Japan.

The commissioning ceremony was held July 3 by the Bethlehem Lutheran Church congregation, Royal, Ia., with the Rev. N. B. Hansen, Poy Sippi, Wis., and Dr. Paul Nyholm, Dubuque, Ia., officiating.

Both are members of the Synodical Board of Foreign Missions.

The Rev. Mr. Eskildsen was graduated from Fresno State College, Cal., in 1950 and from Trinity Seminary in Blair in 1954.

His first pastorate was First Trinity Lutheran Church, Indianapolis, Ind., which he left in 1959 to enter Yale Divinity School.

Mrs. Eskildsen is the former Marian Spear, Greenville, Mich.

## Club Discusses School Program

The Denver Dana Club is investigating the possibility of sponsoring an "All Lutheran College Night" for high school students in the Denver area.

Lutheran colleges would be invited to send representatives to talk with interested prospective students.

The club also discussed plans for the coming year with Cal Jorgensen, executive secretary of the Alumni Association.

Officers of the Denver group include Pastor William Hansen, president; Pastor Arthur Simon, vice-president, and Miss Marie Christiansen, secretary.

## Summer School Classes Packed

Summer school attendance hit a new high this year with an enrollment of 186.

Last year's total was 107.

Dana offered the largest number of summer classes on record. Included was a special health workshop sponsored in co-operation with the Nebraska Psychiatric Institute and the State Health Department.

## Foundation's Take Higher

The Nebraska Independent College Foundation has announced that its contributions of \$132,874.61 in the last fiscal year were up 102 per cent over the previous year.

Dr. C. C. Madsen, newly elected president of the foundation and president of Dana, said the foundation received \$65,707.34 last year.

He said that in the previous year when the foundation's increase was 69 per cent, it was ranked first in the nation among organizations of its type.

### Distribution Varies

"Although comparative figures are not available at this time, it would appear that with a 102 per cent increase in fiscal 1960, Nebraska is still in the No. 1 spot," Dr. Madsen said.

The NICF is organized to solicit funds for the support of eight Nebraska non-tax-supported colleges. But it can distribute funds to any college designated by donors.

Undesignated gifts are distributed on the basis of 60 per cent equally and 40 per cent proportionately to enrollments of the member colleges.

### 143 Gave

Dr. Madsen said there were 143 contributors last year. He said 77 per cent of them were corporations with home offices in Nebraska.

The fund distribution:

Dana	\$15,197.83
Doane	16,469.32
Duchesne	13,914.01
Hastings	21,435.55
Midland	16,906.65
Wesleyan	24,075.36
Union	20,098.94
St. Mary's	3,061.61
Creighton	215.34

Creighton is not a member of the NICF and the College of St. Mary joined as of July 1, but designated funds were distributed to them in conformity with the wishes of the donors.

Meanwhile, a similar organization in Iowa also reported success. Edward Anson, executive secretary of the Iowa College Foundation, said foundation income last year was 239 thousand dollars.

# Smith In Maine GOP Campaign

If Election Year 1960 is an accurate barometer of national trends, America is entering a new era: The age of young men in politics.

And if it really is true that the old-time political boss is on the way out with his nickel cigars and torchlight parades, a new, more scientific approach to the problem of getting votes is being heralded.

One of Dana's younger alumni (Class of 1958) typifies both: new movements.

He is Peter W. Smith, 24, of Portland, Me., who is in the thick of the New England political battle as campaign co-ordinator for his state's Republican Party.

### Public Relations

Alumnus Smith, an English major now writing a Master's thesis on businessmen's practical politics courses for Syracuse University, is on a five-month leave of absence from his job as public relations director for the Greater Portland Chamber of Commerce.

As Republican campaign co-ordinator, he is handling candidacies of Gov. John H. Reed, Senator Margaret Chase Smith

and three Congressional hopefuls including incumbent Clifford G. McIntire.

Politics is nothing new for Pete Smith.

### Young Republicans

He organized Dana's Young Republican Club, then moved up through the organization to become chairman of the National College Young Republican Clubs. This involved travel in 27 states from YR headquarters with the GOP National Committee in Washington, D. C.

His present work in Maine includes public relations counselling, campaign planning, media advice and poll taking.

"This election," he says, "is Maine's first opportunity to turn back a Democratic tide."

### "Up-Hill Battle"

It's no cinch job the Danian has taken on. Example: This is the first election year in history when a Republican Presidential candidate has thought it necessary to campaign in Maine.

"Our candidates, like Republicans everywhere, face an uphill battle this November," Hete says. "But they are

greatly encouraged by the enthusiastic response to our national Nixon-Lodge ticket."

He said Maine Republicans "have no delusions about the kind of hard-hitting campaign we must wage if we are to win."

### Not For Him

Alumnus Smith says he has learned just enough about politics so that he would never run for political office himself.

At Dana Pete was class president, member of Student Council and the debate team, business manager of student publications, track letterman and director of a student radio program.

He is an associate of the American Marketing Association, a member of the U. S. Junior Chamber of Commerce and Advertising Associates of Maine and vice-president and trustee of Trinity Lutheran Church, Westbrook, Me.

Mrs. Smith is the former Janet Langenfeld, Racine, Wis., who attended Dana 1956-58. The Smiths have a 10-month old daughter, Linda.

### 1959

WILLIAM D. CORNWELL (57-59) is presently serving in the Navy. His mailing address is SOHAR-MAN—U. S. Navy, 5375031, Fox Division, USS Frank Knox, DDR 742, % Fleet P. O., San Francisco 33, Cal.

DAVID OESTRICH is now attending the University of Nebraska on a teaching assistantship in chemistry to work towards his Master's degree. He finished a six-month tour of active duty with the Army at Ft. Sam Houston, Tex., in August.

### 1956

JOHN E. PETERSEN (54-56) is attending Luther Theological Seminary, 2345 Como Avenue, St. Paul, Minn.

### 1955

Mr. and Mrs. C. Fred Ivers (DOROTHY VORTHMAN 52-55) are now living at 1739 Tulane, Palo Alto, Cal. They have one daughter, Jennifer Marie, two.

### 1953

Mr. and Mrs. Marlin Reissig (NANCY BROWN 51-53) are now living at 1242 East Jessamine, St. Paul, Minn.

### 1951

Mr. and Mrs. James (Bill) Watkins (MARIE LOUISE NIELSEN 49-51) are living at 3686 Division Street, Los Angeles 65, Cal., where Bill is sales manager for Expanded Rubber and Plastics Corporation. They have two children, Marie Elizabeth, two, and Steven William, nine months.

### 1949

Dr. Bernhard Erling, teaching at Gustavus Adolphus College, received the Ph.D. degree from Lund University in Sweden in March. He defended a thesis on "Nature and History Related to Methodology" before a group of Danish and Swedish scholars. Dr. and Mrs. Erling (MARILYN SIERSBECK 47-49) live at 1325 South Seventh Street, St. Peter, Minn.

RAY VERN JOHNSON of 106 North Main Street, Troy, Ill., received his M. A. degree in Education from Washington University, St. Louis, Mo., on June 6. Ray, who is managing editor of the Troy Tribune, also teaches part time at the junior high school and coaches the basketball team.

### 1948

RICHARD A. NOTZOLD (47-48), who is an instructor in veterinary anatomy at the University of Illinois, received his Ph.D. in June from the University of Illinois. The Notzolds have three children, Gretchen Ann, six, Lauren Jane, five, and Dana Elizabeth, three. Their home address is 204 West Pennsylvania Avenue, Urbana, Ill.

### 1947

Mr. and Mrs. Gilbert Eckern (PATRICIA QUIST 46-47) and their children, Scott, three, and Robin Adele, one, are living at 2662 Chassella Way, Rancho Cordova, Cal. Gil is chairman of the Division of Business at American River Junior College in the greater north area of Sacramento, Cal. He is also vice-president of the church



Smith, Reed, Senator Leverett Saltonstall of Massachusetts (from left) . . . Map campaign strategy.

council of the newly-formed Grace American Lutheran Church of Rancho Cordova. Pat is a member of the choir and also serves as substitute organist.

1937

**HAROLD QUALSETT** graduated in August from the University of Wisconsin School of Banking at Madison, Wis. Harold, who is executive vice-president of the Clarkson Bank, his wife and three sons, David, 16, Richard, 13, and Robert, 10, reside at 1005 Aurora Street, Clarkson, Neb.

1936

Mrs. William Nielsen (**NEL-LIE ROSE WILKINS** 33-34, 35-36) who teaches at Sutherland School, Blair, is now secretary of the Washington County Teachers' Association. Her home address is 2438 Fontenelle Boulevard, Blair.

1924

**ELIZABETH NYHOLM** (23-24) is assistant professor of foods and nutrition at the University of Illinois. She is also chairman of College Teachers of Food and Nutrition of North Central Region and does radio and TV work on **WILL**, University of Illinois Station. Her address is 606 West Vermont, Urbana, Ill.

## New Jobs, Promotions

1960

**PATRICIA PETERSEN** (53-55, 58-60) is now serving as parish worker at Golgotha Lutheran Church, Chicago. Pat's duties include being parish secretary, organist and member of the Youth Advisory Board as well as serving as assistant to Pastor Ingward Olsen. Her address is 8600 South Kilpatrick, Chicago.

1959

**DON KRUSE** is teaching history this year at Nemaha, Neb. He is also coaching football, basketball and track.

**WAYNE NOVAK** (58-59) is now employed by John O'Brien Distributing, Inc., a record distributing com-

pany. His address is 4016 Victory Avenue, Racine, Wis.

1958

**Mr. and Mrs. JAMES HEISER** (52-54, 56-58) (**CARLENE PETERSEN '58**) have moved from Minneapolis to Eugene, Ore. Jim, who was graduated from the University of Minnesota last June, is employed as a physical therapist at the Eugene Hospital and Clinic. His work is mostly with victims of logging accidents. They have one son, John Michael, six months old.

1955

**Pastor and Mrs. ERVIN DOHMEIER** (T. '55) have moved from Minden, Neb., to Brownton, Minn.

**ORVAN B. PETERSON** received his Master's degree in English from the University of Missouri on August 5. Orvan and his wife, Ann, have moved to Gainesville, Fla., where he is now teaching at the University of Florida.

**NEIL MOORE** has been named assistant athletic director at Iolani School in the Hawaiian Islands. Iolani School is an Episcopal church school. He will serve as assistant varsity coach in football, basketball and track and will be an instructor in general science in the seventh grade. Neil, who has taught at Sparks, Nev., the past two years received his Master's degree from the University of Nevada in July.

**JOHN WILLIAMS** (52-54), a mechanical engineer with Astronautics Corporation of America, has been promoted to project engineer. Mr. and Mrs. Williams (**BEVERLY KRUTY** 52-54) and their two children, children, Craig, two, and Laurie Ann, one, moved to their new home at 2701 Jean Avenue, Racine, Wis., at the end of September.

**RONALD L. WILSON** (51-54) is employed as a programming technician at an air base south of Grandview, Mo. His address is 423 Lakeview Street, Lee's Summit, Mo.



## Nurse, Alumni President Wed

Alumni Association President A. Robert Hemmingson and Miss Alta Christiansen were married May 21 at Ferguson Falls, Minn.

The bride is assistant head nurse of the psychiatric unit of Fairview Hospital in Minneapolis.

The couple will live at 4204 Columbia Avenue South, Minneapolis, while Bob studies at the University of Minnesota. He presently is on a leave of absence from the economics department of Augsburg College in Minneapolis.

1953

**FLOYD G. PETERSEN** has been at Poughkeepsie, N. Y., during the summer taking a course in high speed IBM computers. Following completion of the course, he was transferred from the Omaha office to the IBM office in Cedar Rapids, Ia.

**WILLIAM I. PETERSEN, JR.**, (52-53) is now employed as a life insurance underwriter for Massachusetts Mutual. The Petersens have two sons, William, four, and Michael, three. Their mailing address is Box 92, RFD 1, Westbrook, Me.

1952

**MYRON (AL) TAMBLING, JR.**, (52, second semester) a fighter pilot stationed with the Air Force in Japan, has recently been promoted to First Lieutenant. Mrs. Tambling and their three children, Susan Gayle, four,

Lisa Michele, three, and Myron, 1, left August 19 to join Myron in Misawa, Japan. Their mailing address is AO 3037490, Box 101, Fourth FISAPO 919, San Francisco, Cal.

1951

**CHARLES DOIDGE** qualified for the CPA certificate in the May, 1960, examinations. He established his public practice of accounting in April, 1956. Mr. and Mrs. Doidge and their four children live at 309 East Wyoming Street, Redwood Falls, Minn.

1949

**Mr. and Mrs. GERALD HATT** (**JANICE AYE** 52-53) and children, Gregory, five, and Karen, three, have moved from LaPuente, Cal., to Shelby, Ia., where Jerry will be music instructor in the Shelby schools. He was music instructor at Dana during the 1952-53 school year.

1942

**Pastor and Mrs. ALVIN C. RUETER** (**BEULAH C. NEILSEN** 40-41) have moved from Tulsa, Okla., to Lincoln, Neb., where Pastor Rueter was installed as pastor of the American Lutheran Church on July 17. They have five children: Judy, 14, John 13, Christine, 12, Pauline, seven, and Theodore, three. Pastor Rueter was elected secretary of the Central District, The ALC. Their home address is 925 North 42nd Street, Lincoln.

1927

**MARTHA M. PEDERSEN** (26-27) is now employed by the Tousley Construction Company, Inc., as a secretary. She is also director of Spiritual Ministries Committee of the church council of First Trinity Evangelical Lutheran Church, Indianapolis, Ind. Her home address is 116 Hoss Road, Indianapolis.

## Engagements

1958

**MARK THOMPSON** (55-56, 57-58) and Donna Jean Francis. No date has been set for the wedding. Donna is a senior at Peru State

Teachers College, Peru, Neb., and Mark is stationed at the U. S. Naval Base, San Diego, Cal.

**WILLIAM A. CHRISMAN**, 3d, (56-58) and Barbara Booton, Blair. Bill, whose address is 3180 Arcadia Avenue, Omaha, is in business with his father in the Omaha Cash Register Company. A November wedding is planned.

1957

**BETH PROCHNOW** (56-57) of Fort Calhoun, Neb., and William Burdess. An autumn wedding is planned. Beth is employed by the Army Corps of Engineers. Bill is employed by the Omaha Public Power District.

## Weddings

1960

**ELAINE LILLETHORUP** and Duane Olson were married June 5 at Omaha. They are now living in Blair. Duane is a senior at Dana and Elaine is teaching in Omaha. Mr. and Mrs. **MARK PETRUSSEN** (**CAROL JOHNSON** 58-60) were married August 13 at Los Angeles, Cal. They are now living in Grand Island, Neb., where both are teaching.

Mr. and Mrs. **MILO STROZENSKY** (**MARGARET ERPELDING** 57-60) were married June 5 at Jesup, Ia. They are now living at 1373 East Rich Street, Columbus 5, O. Milo is attending the Evangelical Lutheran Theological Seminary at Capital University and Margaret is attending the university.

Mr. and Mrs. **JOHN TARRELL** (59-60) (**JOAN COFFEY** '58) were married August 27 at Blair. They will make their home in San Manuel, Ariz., where Joan is a high school teacher. John will continue his education at the University of Arizona.

1959

**SHIRLEY FRYMAN** (S S '59) and John C. Nyberg were married June 19 at Blair. Shirley is teaching in the Holdrege City Schools and John is employed by the Loomis Co-op. Oil Company. Their home address is 718½ Sherman, Holdrege, Neb.

**MARY LAMBRECHT** (58-59) and Lyle Christensen were married May 28 at Irvington, Neb. They are now living on a farm near Bennington, Neb., and Mary is teaching.

Mr. and Mrs. **HAROLD HOLM**, 3d, (**GRACE JENSEN** 56-58) were married June 10 at Irene, S. D. They are making their home at Irene where Harold is farming.

**If you sent an item to Destiny's Deep Sea and don't see it here, it is not because the editors decided not to use it. We welcome all the news we can get. If there is anything missing in this quarter's Sea it is because we had an early deadline and some late items necessarily had to be carried over to the next issue.**

**SUSAN JORGENSEN** and Andrew Andersen were married June 26, at Milltown, Wis. They are now living in Blair, where Andy is a senior at Dana. Susan is teaching in the Blair public school system.

Mr. and Mrs. **ROGER KLOPP** (58-59) (**MARY JACOBSEN** 52-54) were married June 5 at Elk Horn, Ia. They are now living at LeMars, Ia., where both are teaching in the LeMars public schools.

Mr. and Mrs. **ERNEST LARSEN** (**JoANN HUNDTOFT** 57-59) were married June 4 at Sidney, Mont. Ernie is attending Wartburg Seminary and JoAnn is teaching. Their home address is Ace Trailer Court, Route 2, DuBuque, Ia.

## Forest Ranger Linahan Finds Art, Nature Work Combine In Lonesome Estes Park Patrol Duties

John D. Linahan, Class of 1959, holds down one of the most unusual spots in the line-up of alumni occupations.

Alumnus Linahan is a forest ranger at Estes Park, Colo.

His present assignment with the Park Service is as a back-country patrolman, a job generally assigned to young bachelors.

"They prefer not to station married men in some of these out-of-the-way places," he explained.

Part of last winter the for-

mer art student was on ski patrol and also was assigned to the Trail Ridge Road patrol.

There's no lookout-tower work for Ranger Linahan.

"What we really do," he said, "is protect the park animals and some of the tourists."

Most of his present beat has to be covered on foot—the back trails of the park are inaccessible by auto or even by horse.

Jack, who had a series of art-contest firsts at Dana, has



## Dressed Up

Something new has been added to the college seal. An artist of the Netherlands Export Engraving Company, Amsterdam, Holland, reworked the old drawing. Lettering was streamlined a bit, the Viking given added grace and virility and some of the shading was toned down so the engraving would print more clearly. The Lutheran Publishing House has five different sizes for printing jobs.

1958

**ARNOLD FOSS** and Lulubelle Daily were married May 28 at Davenport, Ia. Arnie is employed by the State Income Tax Department in Davenport.

1957

**EILEEN JORGENSEN** (55-57) and Don Mattox were married June 8 at Poy Sippi, Wis. Eileen is an elementary teacher in the Omaha school system and Don is elementary principal of the Blair public schools. They are making their home at 1463 Washington Street, Blair.

**MARIETTA PETERSEN** (56-57) and Norman Stenson were married November 29, 1959, at Ruskin, Neb. They are living at Hardy, Neb., where Norman is farming.

1956

**MARIAN SNYDER** (55-56) and Norman Rohloff were married at Fremont, Neb., May 22. Norman is employed at Western Electric, Millard, Neb. Marian is teaching.

1955

**GUNNAR MENGERS** and Susan Bergstresser were married July 17 at Coral Gables, Fla. Gunnar is a rewrite man and religious news editor of The Omaha World-Herald. The couple lives at Embassy Court, Thirty-sixth and Cuming Streets, Omaha.

1952

**CALVIN JORGENSEN** and Alice Eriksen were married June 26 at Denver, Colo. Cal is Admissions Counselor at Dana. Their home address is 255 North Twenty-first Street, Blair.

## Births

Sons

1960

David Lynn, born July 30 to Mr. and Mrs. **RICHARD HUNT**, 2064 Jackson Street, Blair. Mrs. Hunt was manager of the Dana book store and canteen during the 1959-60 school year.

(See Page 7)

done a lot of drawing for the Rocky Mountain Nature Association and has sold a few works privately.

The forest work is not without hazard.

A bear tried to share Jack's tent this summer while he was on patrol in the boondocks.

"We have to trap and transplant a few bears who get too friendly," he said.

His work at Dana included art editorship of the Sower. He was a football lineman, a team captain and member of the track squad.

1958

Lynn Thomas, born August 8 to Mr. and Mrs. Jack Mad- sen (ALICE CHRISTEN- SEN), 674 North Twenty- seventh Street, Blair. Jack is a senior at Dana and Alice works in the college Devel- opment Office.

William Lewis, born June 1 to Mr. and Mrs. WILLIAM SAINT (53-54, 56-58) (NAN- CY LEE NIELSEN 56-58). Bill is a serviceman for People's Natural Gas Com- pany, Auburn, Neb. The Saints also have a daughter, Tammi Lee, two. Their ad- dress is 1301 Nineteenth Street, Auburn.

1956

Evan Ward, born August 18 to Mr. and Mrs. JAMES CLEMON, 2729 Mary Street, Omaha 12, Neb.

1955

Scott Miles, born April 4 to Mr. and Mrs. Loren Carrier (DONNA LEE HANSEN) 53-55), 1250 Juniper Street, Atwater, Cal. Donna Lee is a second grade teacher in the Atwater schools.

John N., born May 11 to Mr. and Mrs. WILLIAM K. PET- ERSON, 2041 Key Boule- vard, El Cerrito, Cal. They have one other son, William K., Jr., two.

1954

James Carl, born in December, 1959, to Mr. and Mrs. Ken- neth Bansemer (PAT BA- KER 52-54), Sacramento, Cal. They have another son, David Alan, two.

1950

Timothy Virgil, born May 2 to the Rev. and Mrs. VIRGIL ANDERSON (LaVAILLE JENSEN 50-51), Flaxton, N. D. The Andersons have five other children, Paul, Ken, Lea, Larry and Gloria.

Stephan, born August 7 to Mr. and Mrs. CLIFTON (BUD) ROBINSON, 1152 South Street, Blair. They have four other children, Kristen Louise, Thomas, Richard and David. Bud, who teaches at Westside Community School in Oma- ha, is also a part owner of the Husker Bowl bowling alley in Blair.

## Daughters

1960

Susan Leigh, born July 2 to Mr. and Mrs. CURT SIE- MERS, 3480 South Eighty- second Street, Omaha. Mr. Siemers, who taught speech at Dana from September, 1958, to January, 1960, now is head of the speech depart- ment and is assistant dean of men at the University of Omaha.

1955

Deborah Lee, born April 8 to Mr. and Mrs. LARRY DEAN PEDERSEN (55-55), 3124 East Twenty-ninth Street, Minneapolis. Larry works in the sales department of the Harmon Glass Company.

1953

Tami Jensine, born April 13 to Mr. and Mrs. LEONARD JACKSON (MARILYN KORSHOJ). The Jacksons also have a son, Kim Scott, five. They live at 807 West Eleventh Street, Fremont, Neb.

1952

To Mr. and Mrs. JOHN HEN- RY LASSEN (MYRL FLEM- ING 51-52), Otis, Colo., in May. They also have two sons. John, a music in- structor in Otis, completed work on his Master's de- gree at Greeley, Colo., last summer.

Debra Brooks, born May 8 to Mr. and Mrs. J. B. (Ben) Wallace (CLYDA CARTER), Sedalia, Mo. They also have a son, Robert Carter, six. Their address is Box 51, Sedalia.

1950

Ruth Ann, born April 22 to the Rev. and Mrs. HAROLD L. ANDERSEN (ANN LAGE ANDERSEN '47), Shelby Ia. They have three other chil- dren, Frank, nine, Mary, seven, and Mark, two.

## Deaths

Pastor ERHARDT NIELSEN, June 12, after a long illness. Pastor Nielsen, who served Our Savior's Lutheran Church, Audubon, Ia., since 1944, is survived by his wife, three sons, Mark, Tom and Carl, and a daughter, Mary.

# Viking Football Prospects Brightened By Returnees, Additional Coaching Help

## Third Of Grid Squad Are Lettermen; Keith Skogman Assists

Dana entered football com- petition in its new conference this fall with nearly two teams of lettermen, an en- larged coaching staff and the best prospects for a winning season since 1957.

Forty-six candidates turned out for opening practice—a third of them veterans—and Head Coach Darrell Zimmer- man predicted: "We'll be stronger this year."

### A Contender

It was a safe prediction. Game but outmanned Viking teams failed to win a game in 1958 and 1959, their first and last seasons in the Ne- braska College Conference.

The experience, although mostly unpleasant, was val- uable. And Zimmerman ap- parently has done considerable rebuilding.

In the new Tri-State Con- ference, rated somewhat weaker than the NCC, Dana could be a contender.

The Vikings ran away with the track championship in the league's opening competition last spring.

Only two members, Midland and Concordia, have been reg- ular Dana football opponents; not much was known about the others at the season's start.

### Standouts Return

Strongest of the non-Ne- braska entries appeared to be Westmar College, of Lemars, Ia., picked for a top spot by the Des Moines Register.

Among Dana's top returnees are halfback Stan Cupp and tackle Emory Anderson who were given special mention in "One" magazine's Lutheran College All-American team last year.

Other standouts back in- clude guard Addie Adkins, end Roger Peterson and backs Norman Bock and Larry Swanson.

### Skogman Assists

Assisting Zimmerman and

Paul Peterson this fall is Dean of Men Keith Skogman, a former Dana football coach whose teams compiled excel- lent records in the early 1950's.

He returned to the campus after six years as head foot- ball coach at Nebraska Wes- leyian University.

In his last year at Dana, Skogman's gridders copped the Central Church College Conference title.

## New Crack At Old Foe

The Vikings will have a chance to erase last year's Homecoming humiliation this fall.

They will get another Homecoming crack at Concor- dia, the team that beat them by a touchdown a year ago.

That defeat came after Dana appeared to have the game wrapped up.

The Vikings were two yards from a clinching touchdown when disaster struck. A Con- cordia back scooped up a fumble and rambled the length of the field for the win- ning tally.

Besides taking some of the joy out of Homecoming, the game gave Concordia eighth place in the Nebraska College Conference and pushed Dana to ninth.

This fall Concordia was ranked with Midland as pre- season co-favorites in the Tri- State Conference.

## Football Schedule

### Home\*

October 15—Westmar  
October 22—Concordia (Home- coming)

\* Home games start at 2 p.m. at Viking Field.

### Away

October 8—Northwestern

October 29—Doane

November 5—Midland

## Alumna Hustled Out As Uprising Bloodies Congo

Recent strife in the Congo was closer than mere headlines to one Dana alumna and her husband.

Mrs. Robert Falk, the former Doris Aten, was flown out of the Congo as unrest among mutinous native troops swelled to a crescendo of violence.

Mrs. Falk returned to Nebraska with her two children, Noel, 13, and Linda, three.

### Husband Returned

Her husband returned to his post as a missionary pastor for the Evangelical Free Church of America in the Equatorial Province in the northwest area of the former Belgian colony.

Mrs. Falk said there were no incidents in the area where she lived but that Americans were advised by their consulate that women and children should leave. She said the word was given nine days after independence came June 30.

### "Uprisings Well-Planned"

She said American families in the Congo were unable to understand what caused the bloody uprisings, "but they seemed well planned."

There was an advance inkling of trouble, Mrs. Falk said.

"Six months before independence was granted we asked the consulate what to expect," she said. "We were told we should have one suitcase packed and be ready to evacuate. But it still came as a surprise when we were actually told to leave."

### Airlifted to Germany

Mrs. Falk and the children were taken by car to the Central African Republic, then flown to Frankfurt, Germany, by the United States Air Force.

She brought word to Mrs. Fred Nelson, Bertrand, Neb., that Mrs. Nelson's daughter, who also was in the Congo, was safe in Europe.

Mrs. Falk, daughter of Mr. and Mrs. L. C. Aten, Holdrege, Neb., received her teacher's certificate from Dana in 1946.

Three times as many 18 to 21-year-olds will go on to college now as in 1930.

## Were You Here When

Post-World-War-II enrollment shot up to 411?

Students and faculty took part in a cornpicking bee to raise money for developing the athletic area east of the campus?

Most classes were taught in Danish?

A program approximating the current Development Drive was launched to raise a half-million dollars for Dana?

Students helped pay their tuition with truckloads of livestock and produce?

An aviation course was taught which included actual flying lessons?

More than 150 Danians served in World War I?

## New Dorm Attractive Place

Mickelsen Hall, the new women's residence, would be an attractive addition to any campus.

It is doubly so for Dana.

The four-story red-and-gray trimmed building represents a carefully-planned combination of standard and modern stylings which complement the traditional beauty of neighboring Old Main.

Inside, furnishings and fix-

tures are completely modern.

### Comforts of Home

Tiled floors, tall windows and fabric-covered stairwell walls make the interior as tastefully attractive as the outside.

And the appointments for residents have all the comforts of home, plus a few extras which some homes probably don't have.

There are built-in ranges in the main kitchen, built-in hair sprayers in the washrooms and a completely soundproofed sewing and ironing room.

### Rooms With View

Each room has spacious built-in closets, a full-length mirror near the door, modern blond-wood furniture and a built-in rack for books.

There is an eye-filling view from every window.

On the north, Unter den Linden Avenue sweeps to Old Main. On the west, a still-undeveloped tract of college property rises in a steep grade to where the old wooden cross stands alone atop a hill.

### Missouri Valley

On the east the view is much the same as from Old Main. Beyond Blair the lowlands beyond the Missouri River roll up into the Iowa bluffs.

The southern view overlooks the lush green of Viking Field and farmlands beyond.

Soon there will be shrubs and flowers planted around the building.

## Glee Clubs Won't Meet

The glee clubs of Dana's past will not sing again, at least not this year.

Public Relations Director Phillip A. Pagel said an effort was made to organize a reunion of former men's glee club singers for the Friday night of Homecoming.

But, he said, former directors of the groups said it would be impossible at short notice to round up enough singers and distribute music in advance.

Friday night's program instead will center on the coronation of a Homecoming queen and her court, Mr. Pagel said.

There probably will be a student program in addition, including an appearance by the college band.

## Foreign Teaching Position To Grad

Gunnar Nyholm, Class of 1956, has been in West Germany for about a month, teaching in an American school near Wiesbaden. There are about 13 hundred pupils in the school, all children of American servicemen and civilians.

For the past three years Mr. Nyholm was a teacher and coach at Valley, Neb.

## Former Student Dies In Mishap

Mrs. Edith V. Magnussen, wife of Pastor O. V. Magnussen of Petaluma, Cal., has been killed in an automobile accident north of Fresno, Cal.

Mrs. Magnussen attended Dana 1930-32. Pastor Magnussen is a 1928-29, 1931-35 alumnus and was graduated from Trinity Seminary in 1939.

Six colleges were founded in the American Colonies in the 150 years before the Revolutionary War.

# A HOMECOMING ALBUM

Now, nostalgic photographic memories of Homecoming can be yours the easy way.

With this issue the Alumnus presents a convenient take-home collection of pictures guaranteed to provide stirring recollec-

tions.

This service is designed especially for alumni who forgot to bring their cameras.

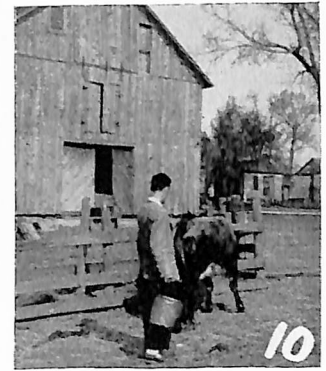
Here it is,, then—your 1960 Homecoming album.



"Good evening, Ed."



"I still think the Alumni Association could afford a nicer float."



"But where do you keep the cows during basketball season?"



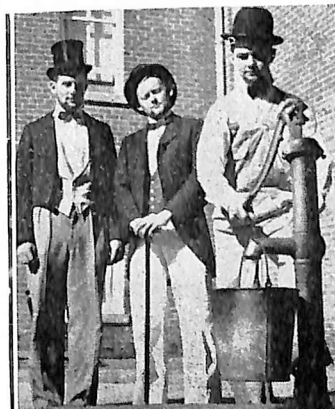
"What do you mean, this is a men's dorm now?"



". . . and then the aebleskiver got stuck in my throat."



"It's a little breezy up here, but you get a wonderful view of the 50-yard line."



"Days of Old Dana? Heck, no. We always dress this way."



"But I thought YOU had the blueprints."

Simon Speech Reprinted . . .

## 'Take New Look at Catholic Attitude'

Excerpts of a speech delivered by a former Dana student to a group of theologians found their way through a Lutheran literary journal and into a leading Catholic news-magazine.

Paul Simon, who left Dana in 1948 to become editor and publisher of the Troy, Ill., Tribune and later to enter the Illinois Legislature as a Democrat, spoke about the religious issue in this election year.

His remarks were printed in the Cresset, published at Valparaiso, Ind., University and later appeared in the July 22 issue of Commonweal, unofficial liberal Catholic journal.

Mr. Simon said:

### Anti-Catholic Tradition

"It is disturbingly clear that part of the tradition which much of modern Protestantism and Lutheranism follows is a tradition of militant, emotional anti-Catholicism.

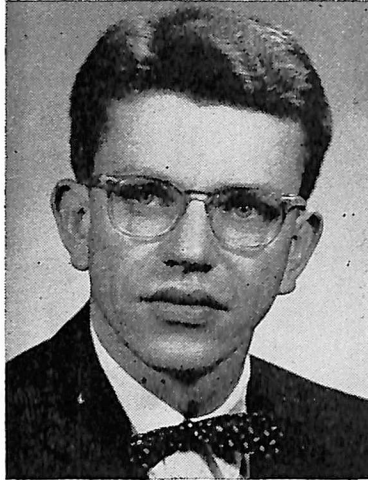
"It is overdue for the church of the Reformation to take a fresh look at this tradition in the light of truth. In the political field, the Democratic Party is frequently accused of 'running against Hoover' instead of the Republican Party of today. There is some justification to this charge.

"But in the religious field there is also some justice to the charge that Lutherans of today are 'running against' Sixteenth Century Catholicism rather than the Roman Catholic Church of today.

### Lutherans Shocked

"Some Lutherans were shocked to see Dr. Franklin Clark Fry (president of the United Lutheran Church in America), quoted in a national magazine as saying he would vote for a Roman Catholic for President of the United States if he thought the Catholic candidate were a better man than his opponent.

"Beyond question there have been areas where there has been abuse by the Roman Catholic Church—just as there have been areas where there has been abuse by the Lutheran Church.



Simon . . . Fresh Look

"Countries where the Roman Catholic Church has a fine record for tolerance are rarely mentioned.

### Jewish Mayor

"Ireland, which is 99 per cent Catholic, has had a Pro-

## Seven Teachers, New And Old, Assume College Faculty Positions

The year at Dana opened with seven new faculty members. Two are former teachers at the college.

Dr. C. Arthur Christiansen, a Dana graduate and former biology teacher at the college, has returned to the campus as academic dean, succeeding Dr. Reuben Poston.

Another former staff member, Keith Skogman, was appointed dean of men and assistant football coach. For the past six years he has been athletic director at Nebraska Wesleyan University at Lincoln.

Miss Bodil Strøm, Vejle, Denmark, joined the faculty as a Danish and girls' physical education instructor. She also will take college classes in American history and literature.

Paul Emmerich, Fremont, Neb., joined the staff as an instructor in freshman English composition. He and Miss Strøm will serve as replacements for Norman C. Bansen, who is on a one-year leave of absence.

Dr. Michael Fallgatter, Wau-paca, Wis., will fill a one-year

vacancy in the chemistry department for P. V. Hansen, Jr. The Rev. Harold G. Becker is replacing the Rev. August Hoeger as an instructor in the religion department.

Mr. Simon stressed this point: "The general position holds that a man cannot separate his personal religious beliefs from his action in political life. For the most part it shapes attitudes rather than specific policies.

"Two men of Christian persuasion, who believe they should love their neighbors as themselves, may disagree with each other on the specific program of carrying out that principle; but neither can disregard the basic precept without violating the religious belief he claims."

The seventh staff addition is Roger Lee Welsh, filling in for modern language professor A. Gordon Ferguson, who is on study-leave in Spain.

### STUDENT GREETING (From Page 2)

working diligently to make it successful. Homecoming is for the alumni, because it is they who will be returning to the college on the Hill. We invite all of you to attend Homecoming festivities October 21-23.

Yes, this year at Dana will be a big year. We hope that you will help us enjoy it. Visit our campus often, write and let us know if you have suggestions or new ideas we might have overlooked.

We students are proud of Dana and we hope you are, too. But we can't remain idle—we must all work to keep our pride honest. Don't forget to visit us.

## Denmark Choir Tour Scheduled For June, July

Plans for the 1961 Denmark choir tour now call for departure about May 29.

Tour manager Phillip A. Pagel said the choir will be accompanied on the six-week trip by Director and Mrs. Paul Neve and Dr. and Mrs. C. C. Madsen.

The 26 non-choir members scheduled to travel with the group include alumni and former faculty members.

Mr. Pagel said there is a possibility some alumni will be asked to sing with the choir.

The group will travel to New York City by bus immediately after 1961 commencement exercises. The trip to Denmark will be made by plane.

There still are about 10 vacancies for the tour, Mr. Pagel said. Alumni interested in accompanying the choir should query the college public relations office, he said.

## Kaldahl Honored By Doctors Frat

Dr. Paul E. Kaldahl, who attended Dana from 1953 through 1956, was named a member of Alpha Omega Alpha on graduation this summer from the medical school of the University of Oklahoma.

AOA, a medical honorary fraternity, is generally regarded as the Phi Beta Kappa of student physicians.

Dr. Kaldahl is serving his internship at County Hospital, Milwaukee, Wis. His address is 8344 A Portland Avenue, Wauwatosa 13, Wis.

Mrs. Kaldahl is the former Joyce Arnold of Neenah, Wis., who studied at Dana in 1955-57.

## College Seeking Education Credit

An examination committee of the National Council for the Accreditation of Teacher Education is scheduled to visit Dana in November.

The group already has granted preliminary approval to Dana's teacher training curriculum.

## Band Size Increasing

An enlarged Dana band is expected to take part in half-time ceremonies at the Homecoming football game.

Dr. Wayne Wise, director of the band, said increased enrollment plus the number of bandmen returning should add up to a bigger organization.

The next band tour is tentatively set for late in April of 1961.

The tour probably will cover the southern part of the Central District of The American Lutheran Church. This would take the band into Kansas and Oklahoma—the farthest it has traveled.

A senior music student at the University of Nebraska has been engaged to give part-time instrumental music instruction.

Lynn Roberts will schedule woodwind and brass lessons beginning with the fall semester.

## Anecdote About Kids In Coronet

An alumna has broken into print with an anecdote about her two children.

Mrs. Russell W. Roder, the former Dorothy M. Seybold, 1946-1948, wrote the following item for the "Human Comedy" section of a recent Coronet magazine:

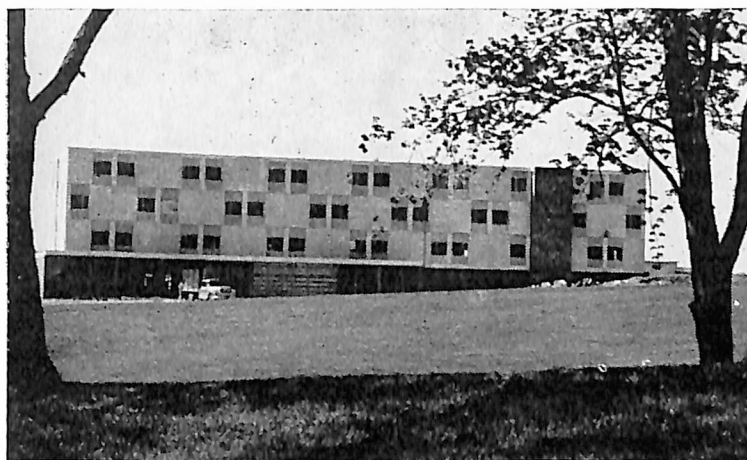
"Recently our four-year-old son and his little sister were fascinated with the sight of their first street fair, particularly the amusement rides.

"Several days later I took them along to the meat market. In one corner the store has a large rotisserie. My tots stood hand in hand in front of it, staring through the glass door.

"When I asked them to join me while I did my shopping, Stephen replied:

"We'll be all right, Mommy. Me and Brenda want to watch the chickens ride the Ferris wheel'."

Mr. and Mrs. Roder and family live at 412 West View Drive, Akron, Pa.



New dormitory . . . Homecoming ceremony next.

## Mickelsen Hall Dedication Slated; Furnishing Memorials Suggested

Dana's first new building in 12 years will be dedicated the Sunday afternoon of Homecoming.

This is Mickelsen Hall, an impressive new residence hall for women. It stands south of Old Main, at the end of Underden Linden Avenue.

Mickelsen Hall, made possible largely through the generosity of Mr. and Mrs. Peder Mickelsen, Minneapolis, Minn., is the second of the major building projects of the million-dollar-plus Development Drive.

It stands near Viking Field, the spacious athletic area which was finished last year in time for the 1959 Homecoming football game.

Memorials can be established by contributions to the cost of furnishing the new hall. Suitable plaques are planned to acknowledge such gifts.

Some of the suggested memorials:

Folding chairs .....	\$ 500
Lounge drapes .....	1,000
Furnishings for dean's apartment .....	1,000
Washers and dryers .....	1,500
Sewing room furnishings .....	1,000
Infirmery furnishings .....	1,500
Room drapes .....	2,000
Furnishings, three kitchenettes .....	2,250
Piano for lounge .....	600
Office furnishings .....	500
Furnishings for dean's office .....	500
Television for lounge .....	200

## Fall Semester's Registration Up

Registration figures for the 1960-61 college year at Dana show a 17% increase in students over 1959-60. A total of 445 students have registered for the first semester classes as compared with 378 at this time last year. The present figure, 445, represents the largest semester enrollment in the history of the College.

The 1960-61 figure includes students from 27 states, Africa, Denmark, Korea, The Canal Zone, and Canada.

"The future of all private colleges and universities could be very precarious because the state is entering more and more into higher education. It's impossible for the charity dollar to compete with the tax dollar." —Richard J. Cardinal Cushing, Archbishop of Boston.

## Fund Drive Nears End; Need More

(From Page 1)

thinks the goal will be exceeded by the time all of the campaigns for funds are completed.

### Progress Report

What's been done so far?

A drive through the campus will show the seven-league strides which have been made in recent months.

Physical improvements include:

Purchase of one hundred acres of land adjacent to the campus; grading and seeding of the new area; road surfacing and curbing; parking facilities and walks; Viking Field; remodeling of the south wing of Old Main; facilities for intramural sports; installation of an eight-inch water line for fire protection; sinking of an irrigation well and construction of a new shop and the new residence hall for women.

### Never Dull Moment

Sounds of construction rarely are absent from the campus these days. Projects now under way include:

Landscaping around the new dormitory; sidewalk construction, drainage and excavation work around Old Main and preliminary work on the plans for a new student activities-physical education building.

Mr. Weismann summed it all up this way:

### Grateful

"We are grateful for the confidence that has been expressed in Dana's future through the many gifts that have come to us for the development program.

"We look to the future with new confidence and zeal, realizing that we have only begun to develop our program and knowing that our many friends in the church will continue to support us with their gifts.

"It has been said, 'It is the many raindrops that make the river.' So it is with gifts to Dana—many gifts will assure the fulfillment of our long-range plans.

"Are you on our team?"

## Alum's Donation Matched In Gift From Employer

Dana has received its first financial gift under a matching-contribution program begun in American industry and business six years ago.

President C. C. Madsen announced receipt of a generous donation from the International Business Machines Corporation to match a contribution by alumnus Floyd G. Petersen, Plattsmouth, Neb., an IBM employe.

Dr. Madsen expressed appreciation of Mr. Petersen's loyalty and said:

### Good Example

"Your example will, I am confident, be an inspiration to others to make similar contributions."

Development Director Boas Weismann noted that the Petersen-IBM gift was the first for Dana in the matching program.

A letter from Dr. Madsen to R. A. Henige, IBM administration manager in Omaha, said:

"We appreciate deeply the vision and constructive support this type of matching grant program gives to us in our mission of higher education."

### Stimulus

Dr. Madsen noted the significant contributions made by the firm "to the cultural and educational life of America and other lands."

"We are confident your gift will be effective in stimulating other alumni to participate in a similar program," Dr. Madsen wrote.

Mr. Henige said IBM was "very proud" to participate with Mr. Petersen in the donation.

At last count there were 69 corporations and foundations taking part in matched-money programs.

### Four Points

The idea began in 1954 at the General Electric Company. It was designed to provide:

—Incentive for regular contribution by the employe who directly benefited from the institution.

—Matching contributions in recognition of the joint bene-

## A Tribute . . .

# To Mickelsens' Leadership

By Dr. C. C. Madsen

It is most fitting that the first building erected as a fruit of Dana's Diamond Jubilee Development Program should be named Mickelsen Hall as our tribute of grateful recognition to Peder and Christine Mickelsen.

This strikingly beautiful building, a residence hall for women, has been made possible primarily because of the generous monetary gifts of Mr. and Mrs. Mickelsen. Just as the building was completed Mrs. Mickelsen made an additional contribution of several thousand dollars to provide complete furnishings for the spacious lounge and reception room area.

Even more important than their financial contributions of approximately 100 thousand dollars have been the Christian vision, leadership and dedication to Dana which have



## Medical Mission Work For Couple

Mr. and Mrs. Jim Sorensen were commissioned as nurse-missionaries to Ethiopia last August in Mr. Sorensen's home town, Irene, S. D.

Mr. Sorensen attended Dana from 1955 to 1957 and was graduated from the Methodist Hospital School of Nursing, Omaha, a month ago. His wife, Carolyn, was graduated from the same school two years ago.

Our Savior's Lutheran Church of Omaha, where the Sorensens are members, honored the couple at a reception August 28.

fits of that education to employer and employe.

—Stimulation of colleges to more active solicitation of alumni support.

—A pattern of corporate support of higher education.

inspired all of us to go forward in faith. Again and again at meetings of the Board of Trustees it was Peder Mickelsen who challenged us:

"This is a mission God has entrusted to us. If we accept this trust and if we have honest concern for the Christian education of our youth God will point the way and provide the means."

In gratitude for such vision and leadership which must ever be the spirit in which Dana continues to grow we proudly dedicate Mickelsen Hall as an expression of our respect and esteem for Peder and Christine Mickelsen.

## Old Main Slope Being Terraced As Center Mall

Another major campus improvement planned for the long-range development program is under way.

This is the grading and landscaping of the area in front of Old Main.

Plans call for a modification in the grade of the sloping hill and a system of terraces near the front of the building.

Eventually, the lawn east of Old Main will become a central mall in the inner circle of a ring of buildings.

Planned is a railed patio directly in front of Old Main, with two terraces stepping down to the grassy mall.

## 1960 Homecoming Schedule

### Friday, October 21, 1960

4-7 p.m.

Alumni Coffee Hour  
Lounge of Mickelsen Hall

7:30 p.m.

Coronation Ceremony  
Alumni Memorial Auditorium  
Pep Rally Follows

9:00 p.m.

Kaffebord for Alumni,  
Students and Faculty  
College Dining Room

### Saturday, October 22, 1960

8:30 a.m. - 12:00 p.m.

Alumni Coffee Hour and  
"Get-Together" Sessions  
Lounge of Mickelsen Hall

10:00 a.m.

Judging of Outside Displays

1:30 p.m.

Parade of Royalty  
Dana Vs. Concordia

3:30 p.m.

Viking Field  
Alumni "Get-Together"  
Canteen

6:30 p.m.

Homecoming Banquet  
College Dining Room

8:00 p.m.

Homecoming Program  
Alumni Memorial Auditorium

9:30 p.m.

Alumni Kaffebord  
Canteen

### Sunday, October 23, 1960

11:00 a.m.

Homecoming Festival Worship Service  
First Lutheran Church, Blair

2:00 p.m.

Dedication and Open House  
Mickelsen Hall

Dana College and Trinity Seminary Alumni Association  
Blair, Nebraska

LARSON MRS JOHN T  
RTE 1  
NORTHFIELD MINN